

**NOTE**  
 PRE-ENGINEERED METAL BUILDING SHALL MEET OR EXCEED THE GENERIC SPECIFICATIONS DEVELOPED BY THE METAL BUILDING MANUFACTURERS ASSOCIATION FOR PRODUCER ENGINEERED STEEL BUILDING SYSTEMS. ADDITIONALLY, THE WALLS SHALL BE ENGINEERED FOR A MINIMUM OF 20 POUNDS/S.F. WIND LOAD & THE ROOF SHALL BE ENGINEERED FOR A MINIMUM OF 40 POUNDS/S.F. DEAD & LIVE LOAD.

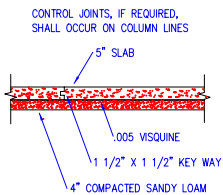
**NOTE**  
 THE BUILDING SHALL BE DESIGNED TO MEET OR EXCEED THE SEISMIC REQUIREMENTS FOR THE BUILDINGS GEOGRAPHIC LOCATION.

**NOTE**  
 THE METAL BUILDING MANUFACTURER SHALL PROVIDE DATA & DESIGN CALCULATIONS FOR ALL OF THE ABOVE DESIGN CRITERIA.

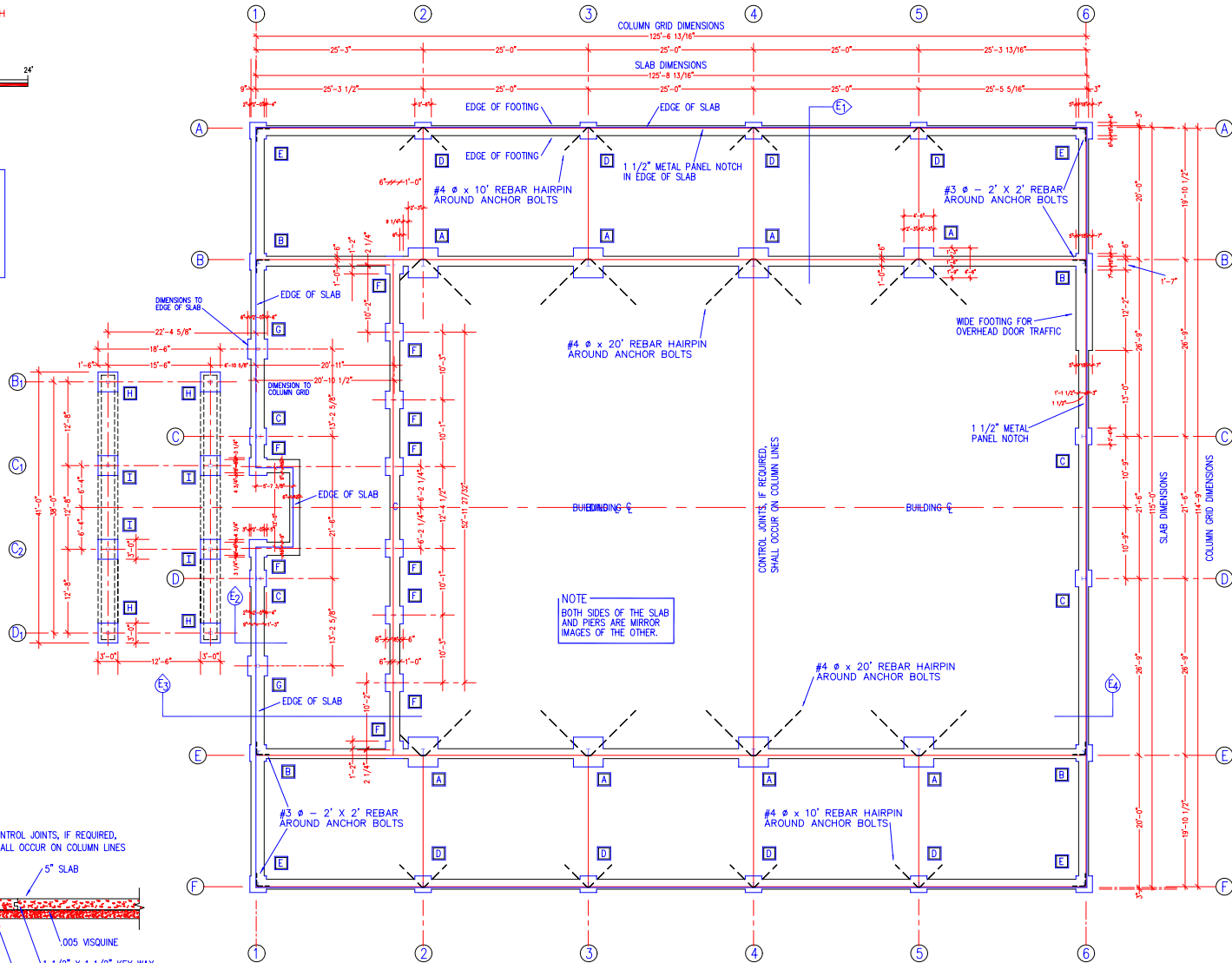
**NOTE**  
 SPREAD FOOTINGS FOR BUILDING COLUMNS ARE DESIGNED FOR A SOIL BEARING PRESSURE OF 2,500 PSI, BASED UPON DEAD LOAD PLUS DESIGN LIVE LOAD. CONTINUOUS FOOTINGS FOR BEARING WALLS ARE DESIGNED FOR A SOIL BEARING PRESSURE OF 2,000 PSI. MINIMUM DIMENSIONS OF 30" FOR SQUARE FOOTINGS AND 18" FOR CONTINUOUS FOOTINGS ARE USED AS RECOMMENDED BY A GEOTECHNICAL REPORT PERFORMED BY PROFESSIONAL SERVICE INDUSTRIES, INC. ON JULY 15, 1998.

MINIMUM PIER DIMENSIONS	
ID	SIZE
A	4'-6" Square
B	2'-6" Square
C	2'-6" Square
D	2'-6" Square
E	2'-6" Square
F	2'-8" Square
G	3'-0" Square
H	3'-0" Square
I	3'-0" Square

**LEGEND**  
 PIER IDENTIFIER X



**CONTROL JOINT DETAIL**  
 SCALE: 1/2" = 1'-0"



**FOUNDATION PLAN**  
 SCALE: 1/8" = 1'-0"

REVISIONS:

02/01/99	

**Philip Kantor Associates, Inc.**  
 ENGINEERS  
 5864 SHADY OAK ROAD - BOX 183-5415 OR 757-262-4400 - HARRISBURG, TN 38317  
 DRAWN BY: LEM  
 SCALE: 1/8" = 1'-0"  
 APPROVED BY: PK  
 DATE: 10/2/98  
 DRAWING FILE NAME: S1-Rev-BBC.dwg

**BRUNSWICK BAPTIST CHURCH**  
**FAMILY LIFE CENTER**  
 BRUNSWICK, TENNESSEE



SHEET NUMBER:  
**S1**  
 REVISED

DESCRIPTION:  
 E:\AUTOCAD\DWG\BCHURCH\NEW  
 S1-REV-BBC.DWG  
 FOUNDATION PLAN