

NOTE
 PRE-ENGINEERED METAL BUILDING SHALL MEET OR EXCEED THE GENERIC SPECIFICATIONS DEVELOPED BY THE METAL BUILDING MANUFACTURERS ASSOCIATION FOR PRODUCER ENGINEERED STEEL BUILDING SYSTEMS. ADDITIONALLY, THE WALLS SHALL BE ENGINEERED FOR A MINIMUM OF 20 POUNDS/S.F. WIND LOAD & THE ROOF SHALL BE ENGINEERED FOR A MINIMUM OF 40 POUNDS/S.F. DEAD & LIVE LOAD.

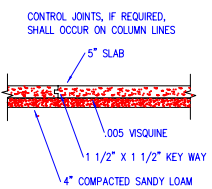
NOTE
 THE BUILDING SHALL BE DESIGNED TO MEET OR EXCEED THE SEISMIC REQUIREMENTS FOR THE BUILDINGS GEOGRAPHIC LOCATION.

NOTE
 THE METAL BUILDING MANUFACTURER SHALL PROVIDE DATA & DESIGN CALCULATIONS FOR ALL OF THE ABOVE DESIGN CRITERIA.

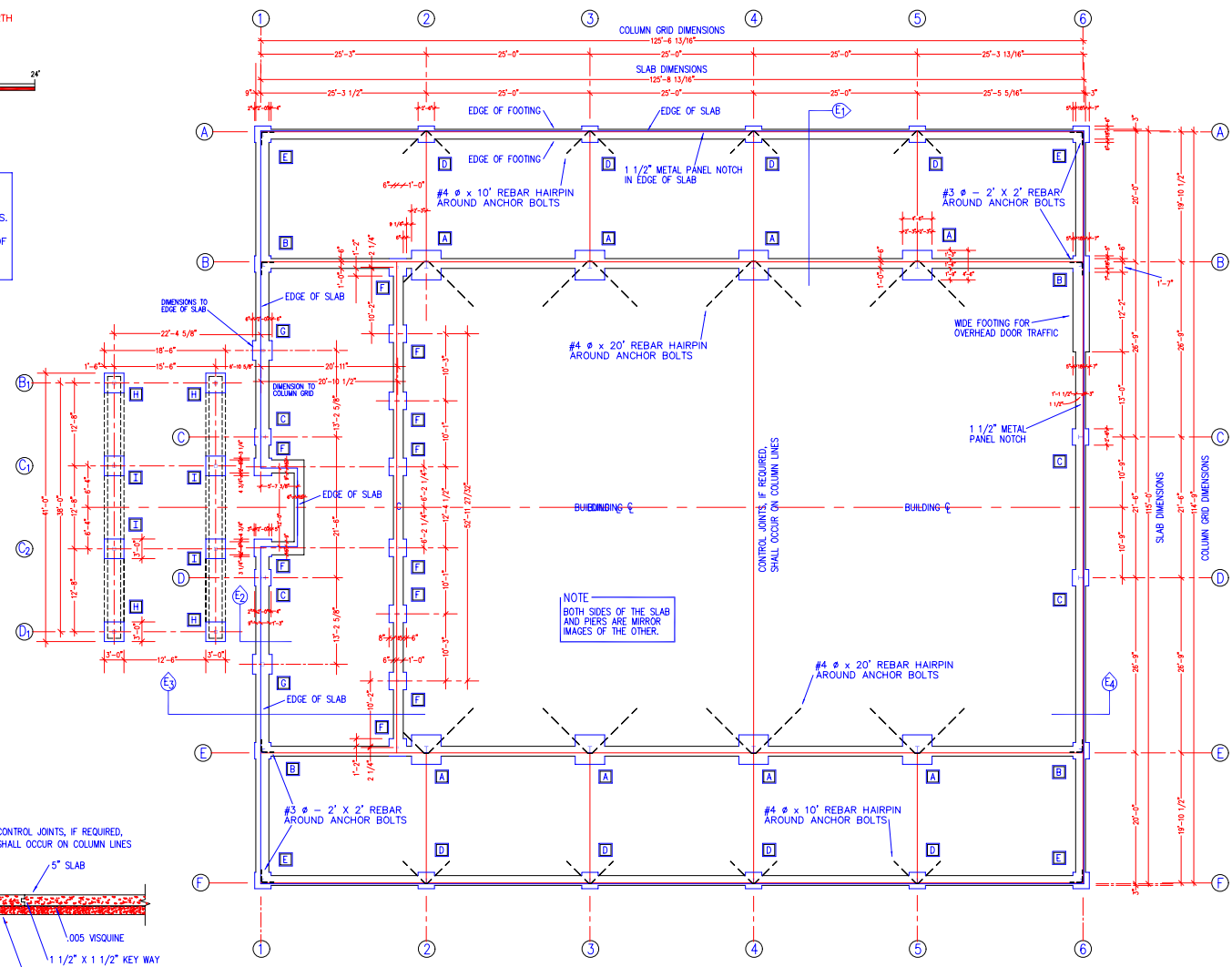
NOTE
 SPREAD FOOTINGS FOR BUILDING COLUMNS ARE DESIGNED FOR A SOIL BEARING PRESSURE OF 2,500 PSI. BASED UPON DEAD LOAD PLUS DESIGN LIVE LOAD. CONTINUOUS FOOTINGS FOR BEARING WALLS ARE DESIGNED FOR A SOIL BEARING PRESSURE OF 2,000 PSI. MINIMUM DIMENSIONS OF 30" FOR SQUARE FOOTINGS AND 18" FOR CONTINUOUS FOOTINGS ARE USED AS RECOMMENDED BY A GEOTECHNICAL REPORT PERFORMED BY PROFESSIONAL SERVICE INDUSTRIES, INC. ON JULY 15, 1998.

ID	SIZE
A	4'-6" Square
B	2'-6" Square
C	2'-6" Square
D	2'-6" Square
E	2'-6" Square
F	2'-8" Square
G	3'-0" Square
H	3'-0" Square
I	3'-0" Square

LEGEND
 PIER IDENTIFIER X



CONTROL JOINT DETAIL
 SCALE: 1/2" = 1'-0"



NOTE
 BOTH SIDES OF THE SLAB AND PIERS ARE MIRROR IMAGES OF THE OTHER.

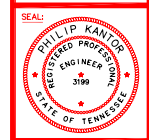
FOUNDATION PLAN
 SCALE: 1/8" = 1'-0"

REVISIONS:

02/01/99	

Philip Kamber Associates, Inc.
Designers • Planners • Engineers
 581 SHADY BUSH ROAD • 801/885-5419 OR 757-484-1817 • MEMPHIS, TN 38117
 DRAWING TITLE: FOUNDATION PLAN
 SCALE: 1/8" = 1'-0"
 DRAWN BY: LEM
 CHECKED BY: PK
 DATE: 10/2/98
 APPROVED BY: PK

**BRUNSWICK BAPTIST CHURCH
 FAMILY LIFE CENTER**
 BRUNSWICK, TENNESSEE



SHEET NUMBER:
S1
 REVISED

DESCRIPTION:
 E:\VTRCAD\DWG\BROU09H\NEW
 S1-REV-BROU.DWG
 FOUNDATION PLAN

