

REVISIONS:	
02/01/99	

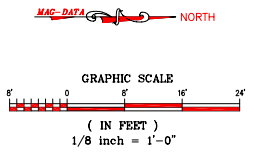
Philip Kamber Associates, Inc.
 Designers • Planners • Engineers
 5811 SHADY GLEN ROAD • 801/885-3418 OR 757-464-1817 • MEMPHIS, TN 38117
 DRAWN BY: LEM
 SCALE: 1/8" = 1'-0"
 DATE: 10/2/98
 APPROVED BY: PK
 DRAWING FILE NAME: M1-Rev-BBC.dwg

**BRUNSWICK BAPTIST CHURCH
 FAMILY LIFE CENTER
 BRUNSWICK, TENNESSEE**

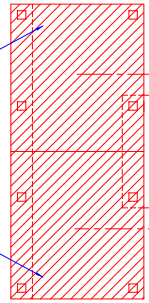
SEAL:

SHEET NUMBER:
**M1
 REVISED**

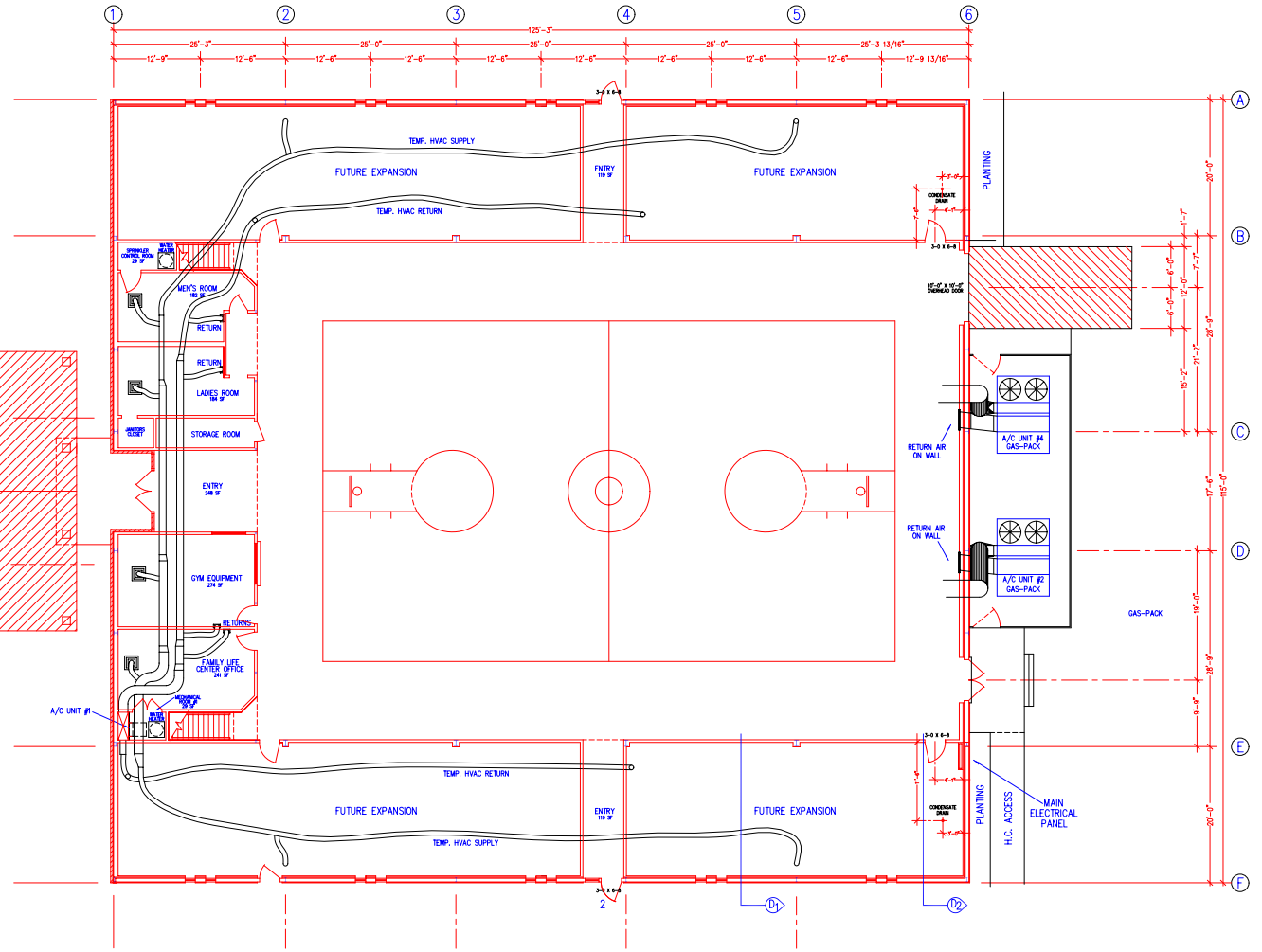
DESCRIPTION:
 E:\AUTOCAD\DWG\BCHURCH\M1-REV-BBC.dwg
 FIRST LEVEL MECHANICAL



NOTE
 FUTURE PORTICO



MECHANICAL EQUIPMENT				
DESCRIPTION	LOCATION	EST. SIZE	POWER	REQ.
A/C UNIT #1	MECH RM #1	8 TONS	208/3 PHASE	
A/C UNIT #2	OUTSIDE N/E	20 TONS	208/3 PHASE	
A/C UNIT #3	MECH RM #2	6 TONS	208/3 PHASE	
A/C UNIT #4	OUTSIDE N/W	20 TONS	208/3 PHASE	
A/C UNIT #5	MECH RM #3	7 TONS	208/3 PHASE	
EXH FAN #1	NORTH WALL	12,000 CFM	208/3 PHASE	
EXH FAN #2	NORTH WALL	12,000 CFM	208/3 PHASE	
EXH FAN #3	NORTH WALL	12,000 CFM	208/3 PHASE	
EXH FAN #4	NORTH WALL	12,000 CFM	208/3 PHASE	



1st LEVEL MECHANICAL PLAN
 SCALE: 1/8" = 1' - 0"

